



*From \$1,214,900*

The beauty that comes with The Bradford is noticed as soon as you enter this home from the large covered front porch. Just within the entrance foyer, you will find a stunning glass office to your right. If you instead enter through the garage, drop off your bags at the Drop Zone bench by the door and get ready for an open-concept floorplan that is enhanced by the natural lighting from the windows. A formal dining room leads you into a luxury kitchen that houses a large island. This space additionally has various options available to make your home uniquely yours by adding a gourmet kitchen island, the caterer's kitchen extension, or choosing the alternate culinary artist kitchen layout. You can even view the spacious Great Room and fireplace from the kitchen. But the first floor doesn't stop there. The Owner's Suite and bathroom are on the ground floor with a giant walk-in closet. This layout allows for an optional deluxe bathroom where you can choose between a free-standing tub shower combo or a large walk-in shower. There is also an additional first-floor bedroom, full bathroom, laundry room with optional ...



**5 Bedrooms**



**3.5 Bathrooms**



**3,593 Sq.Ft.**



**2 Stories**



**2 Car Garage**

**CONTACT US 757-550-2617**

**WWW.CESHOMES.COM**



Chesapeake Homes continuously improves home designs and reserves the right to modify home features and specifications without notice or obligation. Square footage and measurements are approximate. Renderings of elevations are artist's concepts. Floor plans vary per elevation. Chesapeake Homes standard features vary by home design and location, please refer to the included features sheet for the community to define specifications. This brochure is for illustrative purposes and not part of the legal contract. Please ask Sales Associate for complete details. © 2025 Chesapeake Homes. Current information as 3rd July 2025

## FIRST FLOOR OF ELEVATION A



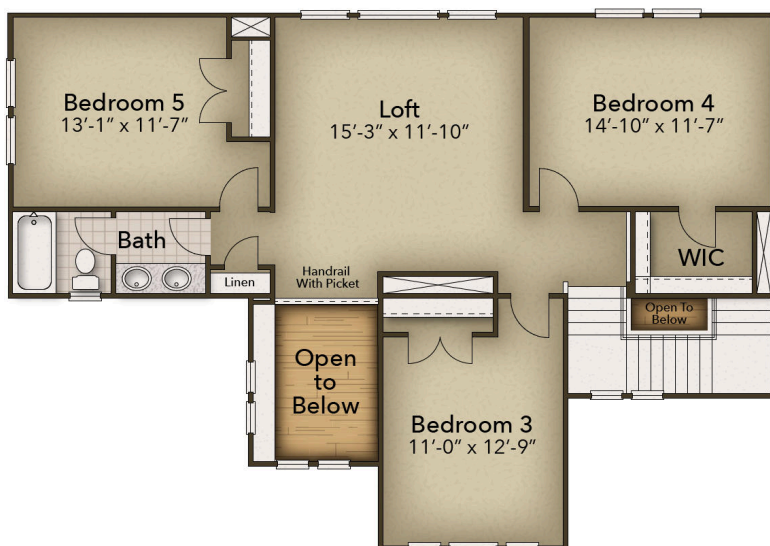
CONTACT US 757-550-2617

WWW.CHESHOMES.COM



Chesapeake Homes continuously improves home designs and reserves the right to modify home features and specifications without notice or obligation. Square footage and measurements are approximate. Renderings of elevations are artist's concepts. Floor plans vary per elevation. Chesapeake Homes standard features vary by home design and location, please refer to the included features sheet for the community to define specifications. This brochure is for illustrative purposes and not part of the legal contract. Please ask Sales Associate for complete details. © 2025 Chesapeake Homes. Current information as 3rd July 2025

## SECOND FLOOR OF ELEVATION A



CONTACT US 757-550-2617

WWW.CESHOMES.COM



Chesapeake Homes continuously improves home designs and reserves the right to modify home features and specifications without notice or obligation. Square footage and measurements are approximate. Renderings of elevations are artist's concepts. Floor plans vary per elevation. Chesapeake Homes standard features vary by home design and location, please refer to the included features sheet for the community to define specifications. This brochure is for illustrative purposes and not part of the legal contract. Please ask Sales Associate for complete details. © 2025 Chesapeake Homes. Current information as 3rd July 2025