



*From \$1,214,900*

Offering over a whopping 3,800 square feet, the new Gardenia II is made with your family's needs and lifestyle in mind. The original Gardenia floorplan has withstood the test of time and now we want to revamp the spacious layout with five bedrooms, three full bathrooms, and an open floor plan. This home offers a first-floor owner's suite with tray ceilings, an attached bathroom (with deluxe options that include choices for an upgraded walk-in shower or free-standing tub), and a vast walk-in closet. You will leave your relaxing owner's suite to enter the spacious great room which flows right into the kitchen with optional gourmet choices, breakfast nook, and dining room. Not a fan of cooking indoors though? An optional outdoor grill, sink, and fireplace can be added to your rear covered porch that can be accessed from your great room. Two other bedrooms and a full bath are found on the other side of the kitchen. A den is at the front of the house by the foyer which can be extended if wanted, but you may just want to use your garage door to enter this home. By ...



**5 Bedrooms**



**3.0 Bathrooms**



**3,882 Sq.Ft.**



**2 Stories**



**2 Car Garage**

**CONTACT US 757-550-2617**

**WWW.CESHOMES.COM**



Chesapeake Homes continuously improves home designs and reserves the right to modify home features and specifications without notice or obligation. Square footage and measurements are approximate. Renderings of elevations are artist's concepts. Floor plans vary per elevation. Chesapeake Homes standard features vary by home design and location, please refer to the included features sheet for the community to define specifications. This brochure is for illustrative purposes and not part of the legal contract. Please ask Sales Associate for complete details. © 2025 Chesapeake Homes. Current information as 24th July 2025

## FIRST FLOOR



CONTACT US 757-550-2617

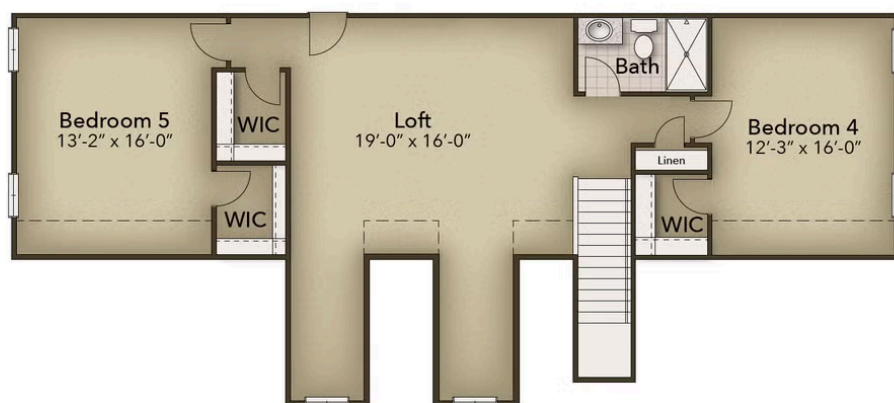
WWW.CHESHOMES.COM



Chesapeake Homes continuously improves home designs and reserves the right to modify home features and specifications without notice or obligation. Square footage and measurements are approximate. Renderings of elevations are artist's concepts. Floor plans vary per elevation. Chesapeake Homes standard features vary by home design and location, please refer to the included features sheet for the community to define specifications. This brochure is for illustrative purposes and not part of the legal contract. Please ask Sales Associate for complete details. © 2025 Chesapeake Homes. Current information as 24th July 2025



## SECOND FLOOR



CONTACT US 757-550-2617

[WWW.CHESHOMES.COM](http://WWW.CHESHOMES.COM)

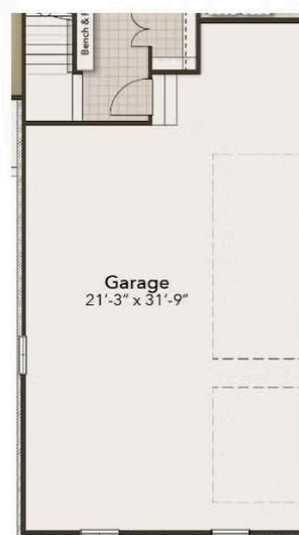


Chesapeake Homes continuously improves home designs and reserves the right to modify home features and specifications without notice or obligation. Square footage and measurements are approximate. Renderings of elevations are artist's concepts. Floor plans vary per elevation. Chesapeake Homes standard features vary by home design and location, please refer to the included features sheet for the community to define specifications. This brochure is for illustrative purposes and not part of the legal contract. Please ask Sales Associate for complete details. © 2025 Chesapeake Homes. Current information as 24th July 2025

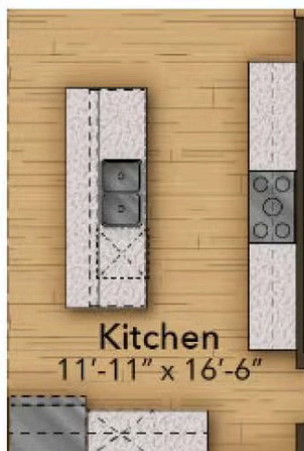
## OPTIONS



Sideload Third Car Garage with  
Single Car Garage



Sideload Third Car Garage



Gourmet Kitchen



Deluxe Owner's Bath

CONTACT US 757-550-2617

WWW.CHESHOMES.COM