



*From \$1,049,900*

Need a home that's personalized and great for everyone in the family... The answer is THE IRIS! This layout offers over 3,000 square feet of home all spaciouly arranged around a central great room. In an open-concept design, the great room is attached to the kitchen and the breakfast nook all separated by a large island with upgrades to a gourmet kitchen layout that includes double ovens. With Five bedrooms, three full bathrooms, and a combination Drop Zone and Laundry room, this home is created with your comfort and space in mind. Love entertaining and this layout, but if you are looking for more space...no worries, an extended breakfast nook, a butler's pantry, or a three-car garage are all options with The Iris. The Owner's Suite is equipped with all the must-have features, such as a walk-in closet, a double bathroom vanity, and options for a bathtub and shower combo. Before you retire for the night to the Owner's Suite, enjoy the day by spending it on the charming covered front porch or kicking up your feet on the relaxing covered back porch. Add the optional outdoor fireplace to make ...



**5 Bedrooms**



**3.0 Bathrooms**



**3,270 Sq.Ft.**



**1 Stories**



**2 Car Garage**

**CONTACT US 757-550-2617**

**WWW.CESHOMES.COM**



Chesapeake Homes continuously improves home designs and reserves the right to modify home features and specifications without notice or obligation. Square footage and measurements are approximate. Renderings of elevations are artist's concepts. Floor plans vary per elevation. Chesapeake Homes standard features vary by home design and location, please refer to the included features sheet for the community to define specifications. This brochure is for illustrative purposes and not part of the legal contract. Please ask Sales Associate for complete details. © 2025 Chesapeake Homes. Current information as 3rd July 2025

## FIRST FLOOR



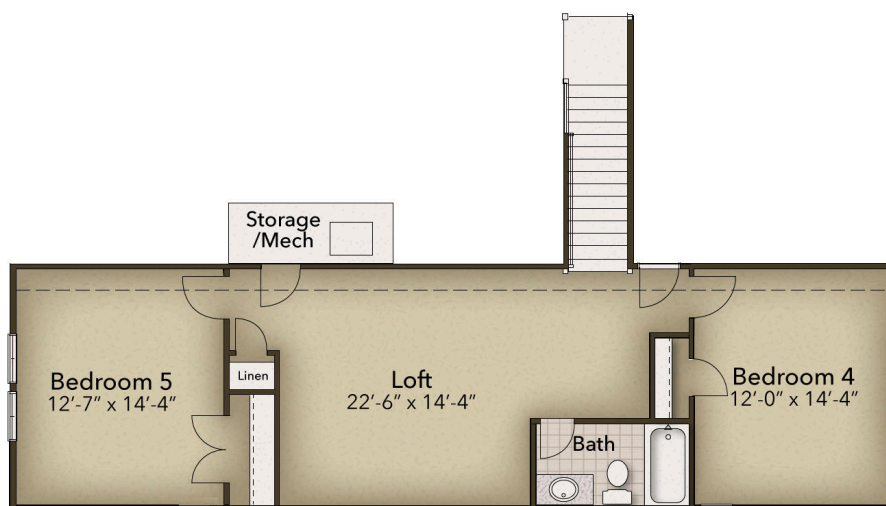
CONTACT US 757-550-2617

WWW.CESHOMES.COM



Chesapeake Homes continuously improves home designs and reserves the right to modify home features and specifications without notice or obligation. Square footage and measurements are approximate. Renderings of elevations are artist's concepts. Floor plans vary per elevation. Chesapeake Homes standard features vary by home design and location, please refer to the included features sheet for the community to define specifications. This brochure is for illustrative purposes and not part of the legal contract. Please ask Sales Associate for complete details. © 2025 Chesapeake Homes. Current information as 3rd July 2025

## SECOND FLOOR



CONTACT US 757-550-2617

WWW.CESHOMES.COM



Chesapeake Homes continuously improves home designs and reserves the right to modify home features and specifications without notice or obligation. Square footage and measurements are approximate. Renderings of elevations are artist's concepts. Floor plans vary per elevation. Chesapeake Homes standard features vary by home design and location, please refer to the included features sheet for the community to define specifications. This brochure is for illustrative purposes and not part of the legal contract. Please ask Sales Associate for complete details. © 2025 Chesapeake Homes. Current information as 3rd July 2025