



From \$1,029,900

The Roseleigh II proves why this layout was a buyer favorite even before the newly revised plan. Now the spacious 3,500 square-foot Roseleigh II home offers more space, with six bedrooms and up to four full bathrooms depending on your layout choice. A covered front porch with wrap around option makes this home feel welcoming right from the front door. Inside the home, you will be amazed by the open floorplan connecting the great room, kitchen, and breakfast nook all together. You can even make this space even more luxurious with the optional sunroom extension in the breakfast nook, a gourmet kitchen island, built-in double ovens, or built-in cabinets around the fireplace. Additionally, on the first floor is a study, a formal dining room, and a guest suite. Upgrade the downstairs powder room to have a completed area for all the guests who will want to see your new home. The second level offers endless amounts of space for all. An Owner's Suite with dual closets and a spa-like Owner's Bath makes for the perfect space away from the hustle and bustle. Three additional bedrooms and the loft/sitting area/5th bedroom means ...



5 Bedrooms



3.5 Bathrooms



3,496 Sq.Ft.



2 Stories



2 Car Garage

CONTACT US 757-550-2617

WWW.CESHOMES.COM



Chesapeake Homes continuously improves home designs and reserves the right to modify home features and specifications without notice or obligation. Square footage and measurements are approximate. Renderings of elevations are artist's concepts. Floor plans vary per elevation. Chesapeake Homes standard features vary by home design and location, please refer to the included features sheet for the community to define specifications. This brochure is for illustrative purposes and not part of the legal contract. Please ask Sales Associate for complete details. © 2026 Chesapeake Homes. Current information as 16th February 2026

FIRST FLOOR



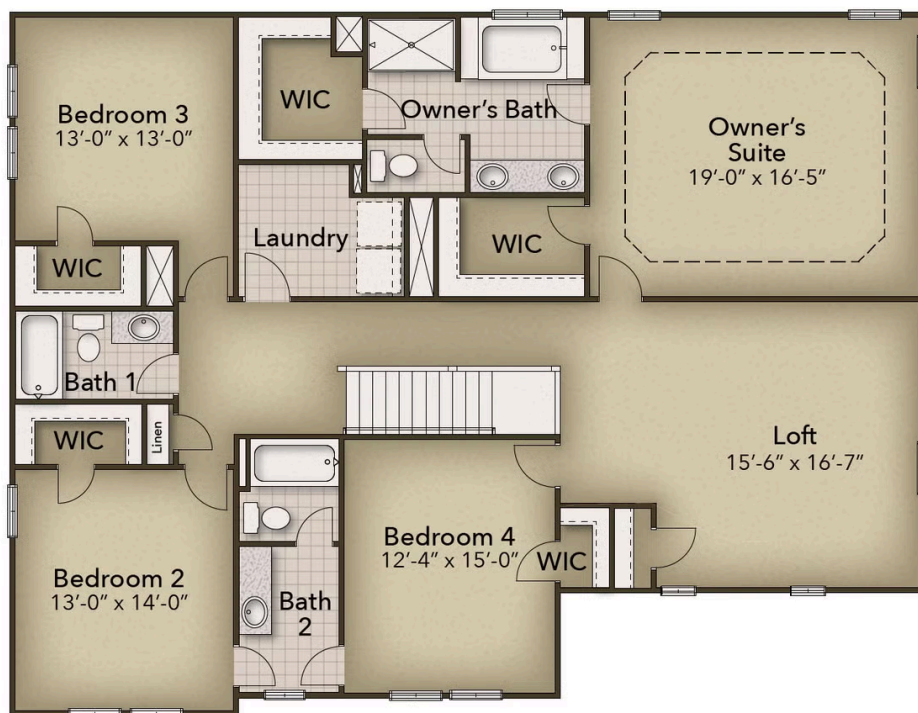
CONTACT US 757-550-2617

WWW.CHESHOMES.COM



Chesapeake Homes continuously improves home designs and reserves the right to modify home features and specifications without notice or obligation. Square footage and measurements are approximate. Renderings of elevations are artist's concepts. Floor plans vary per elevation. Chesapeake Homes standard features vary by home design and location, please refer to the included features sheet for the community to define specifications. This brochure is for illustrative purposes and not part of the legal contract. Please ask Sales Associate for complete details. © 2026 Chesapeake Homes. Current information as 16th February 2026

SECOND FLOOR



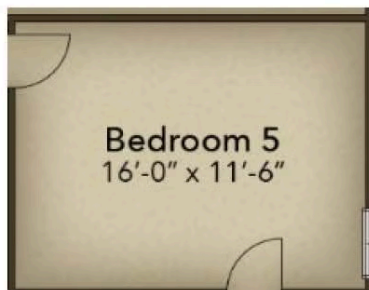
CONTACT US 757-550-2617

WWW.CHESHOMES.COM

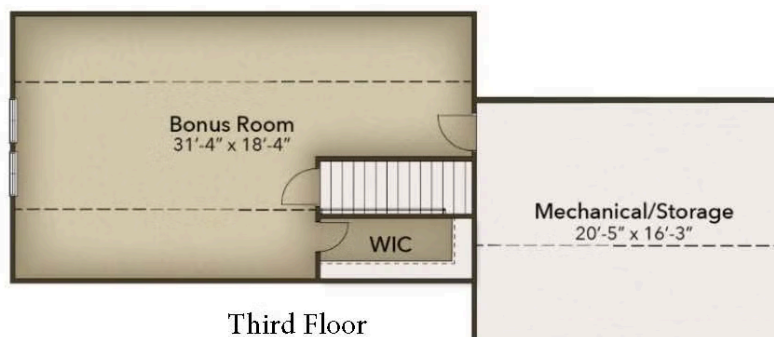


Chesapeake Homes continuously improves home designs and reserves the right to modify home features and specifications without notice or obligation. Square footage and measurements are approximate. Renderings of elevations are artist's concepts. Floor plans vary per elevation. Chesapeake Homes standard features vary by home design and location, please refer to the included features sheet for the community to define specifications. This brochure is for illustrative purposes and not part of the legal contract. Please ask Sales Associate for complete details. © 2026 Chesapeake Homes. Current information as 16th February 2026

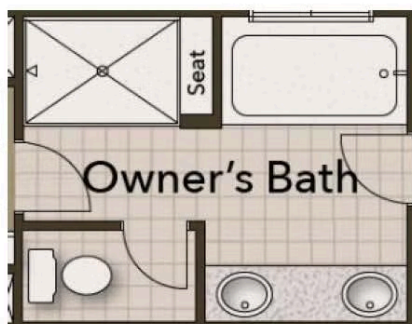
OPTIONS



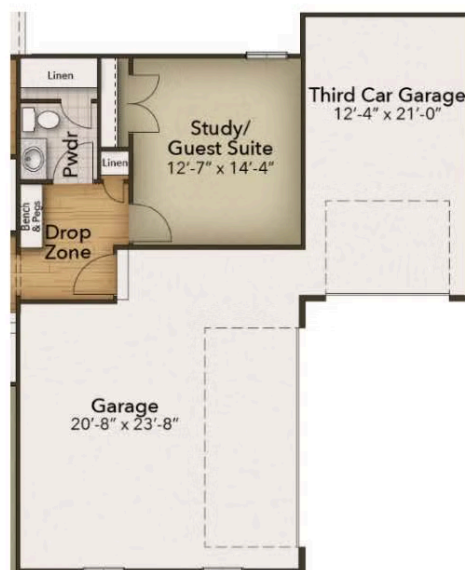
Fifth Bedroom



Third Floor



Deluxe Owner's Bath



Sideload with Third Car Garage

CONTACT US 757-550-2617

WWW.CHESHOMES.COM



Chesapeake Homes continuously improves home designs and reserves the right to modify home features and specifications without notice or obligation. Square footage and measurements are approximate. Renderings of elevations are artist's concepts. Floor plans vary per elevation. Chesapeake Homes standard features vary by home design and location, please refer to the included features sheet for the community to define specifications. This brochure is for illustrative purposes and not part of the legal contract. Please ask Sales Associate for complete details. © 2026 Chesapeake Homes. Current information as 16th February 2026